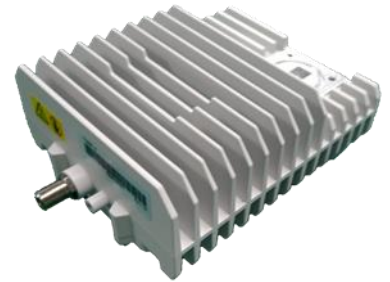


SATCOM TRANSMITTER

BUC

Ku-band 6W BUC

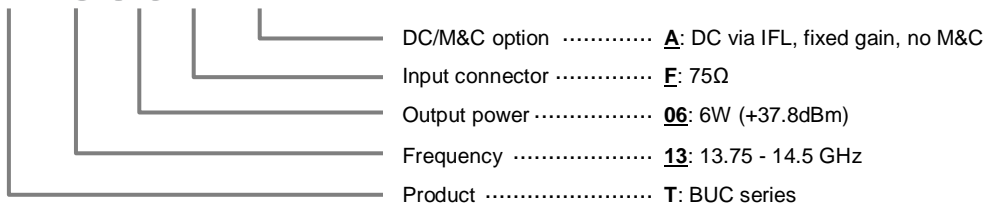
T1306-A

**TYPICAL SPECIFICATIONS**

Output frequency	13.75 to 14.50 GHz	Gain	58dB typ
Input frequency	950 to 1700 MHz	Gain stability over temp	±3.0dB at any Δ40°C, const. frequency
LO frequency	12.80GHz	Gain flatness	0.5dBp-p over any 2MHz 2.5dBp-p over any 125MHz 4.0dBp-p over any 500MHz
Frequency sense	No inversion	Power requirement	+20 to +30 VDC supplied through IFL
Output P1dB	+37.8dBm min @+25°C	Power consumption	38W max
Input VSWR	2.0:1	Input interface	F-female
Output VSWR	2.0:1	Output interface	WR-75
Phase noise (SSB)	-55dBc/Hz max @100Hz -73dBc/Hz max @1KHz -83dBc/Hz max @10KHz -93dBc/Hz max @100KHz	Dimension	156.9(L) x 110(W) x 66(H) mm
External reference signal frequency	10MHz	Weight	880g
External reference level	-15 to +5 dBm	Operating temp	-40 to 55 °C
External reference Phase noise	-140dBc/Hz max @ 1kHz	Humidity	0 - 95 %
Spurious (output power +30dBm)			
In-band	-50dBc		
Out-band	-50dBc		

HOW TO ORDER Ku-BAND 6W BUC

T1306F-A



SATCOM TRANSMITTER

OUTLINE DRAWING AND INTERFACE

