

SATCOM TRANSMITTER

BUC

C-band 40W BUC

T5040, T5140, T5240, T5340, T5440, T54E40, T6040



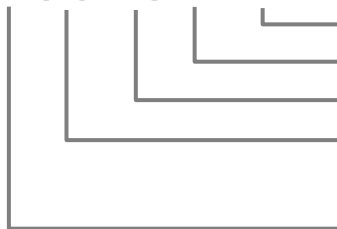
TYPICAL SPECIFICATIONS

Output frequency	T5040: 5.850 to 6.425 GHz T5140: 5.850 to 6.650 GHz T5240: 5.850 to 6.725 GHz T5340: 5.725 to 6.525 GHz T5440: 5.725 to 6.225 GHz T54E40: 5.725 to 6.725 GHz T6040: 6.725 to 7.025 GHz	Spurious (In/Out-band)	-50dBc
Input frequency	T5040: 950 to 1525 MHz T5140: 950 to 1750 MHz T5240: 950 to 1825 MHz T5340: 950 to 1750 MHz T5440: 975 to 1475 MHz T54E40: 975 to 1975 MHz T6040: 950 to 1250 MHz	Gain	73dB max @0dB attenuation
LO frequency	T5040: 4.9GHz T5140: 4.9GHz T5240: 4.9GHz T5340: 4.775GHz T5440: 4.75GHz T54E40: 4.75GHz T6040: 5.775GHz	Gain control	Δ15dB (58 to 73 dB), 1dB step
Frequency sense	No inversion	Gain stability over temp	±2.0dB max
Output P1dB	+46dBm typ	Gain flatness	±1.0dB in any 36MHz ±2.5dB over full band
Input return loss	12dB min	Power requirement	+43 to +53 VDC supplied through MS connector
Output return loss	15dB min	Power consumption	300W max
Phase noise (SSB)	-60dBc/Hz max @100Hz -73dBc/Hz max @1KHz -83dBc/Hz max @10KHz -93dBc/Hz max @100KHz	Input interface	N-female, F-female
External reference Signal frequency / level	10MHz / -5 to +5 dBm	Output interface	CPR-137G
External reference phase noise	-140dBc/Hz max @ 1KHz	Dimension	280(L) x 160(W) x 110(H) mm
		Weight	5.5Kg max
		Operating temp	-40 to +55 °C
		Humidity	0 - 95 %
		DC connector	MS3112E14-5P
		M&C interface	MS3112E12-10P
		M&C function	- Output power - Temperature - LO status - Output power mute - Gain control - Fan status - Firmware upgradable

* External mute option is available upon customer request.

HOW TO ORDER C-BAND 40W BUC

T5340N-E



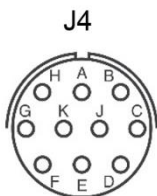
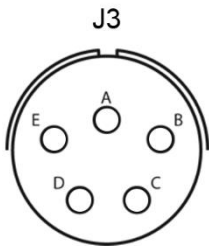
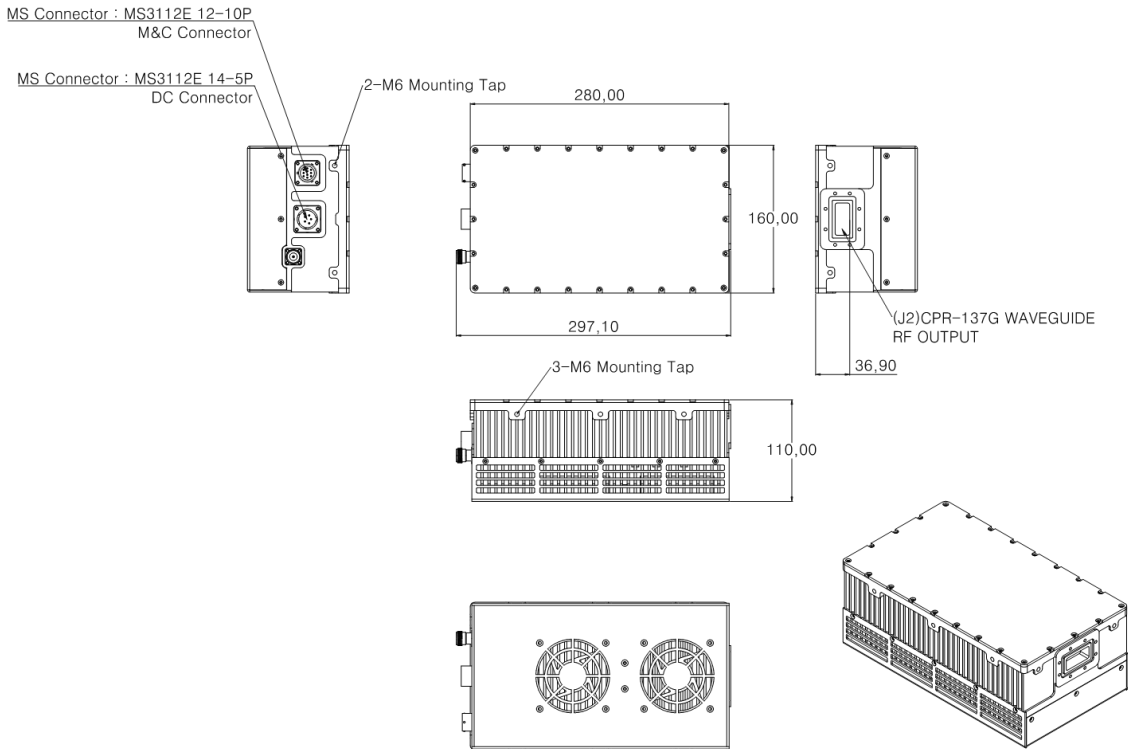
- DC/M&C option **D0**: DC via MS connector, fixed gain, no M&C
D: DC via MS connector, fixed gain, M&C
E: DC via MS connector, gain adjustable, M&C
W: DC via MS connector, gain adjustable, M&C (Web browser)
- Input connector **N**: 50Ω, **F**: 75Ω
- Output power **40**: 40W (+46dBm)
- Frequency **50**: 5.850 to 6.425 GHz, **51**: 5.850 to 6.650 GHz, **52**: 5.850 to 6.725 GHz,
53: 5.725 to 6.525 GHz, **54**: 5.725 to 6.225 GHz, **54E**: 5.725 to 6.725 GHz,
60: 6.725 to 7.025 GHz
- Product **T**: BUC series

SATCOM TRANSMITTER

AVAILABLE OPTIONS

Option	Gain Control	Connectors		M&C	
		DC Input	M&C	PC-based GUI (Ethernet or RS-232)	Web-based GUI (Web browser)
D0	Fixed Gain	MS3112E14-5P (5-pin)	No M&C Function	No M&C Function	
D	Fixed Gain	MS3112E14-5P (5-pin)	MS3112E12-10P (10-pin)	Available	Unavailable
E	Adjustable	MS3112E14-5P (5-pin)	MS3112E12-10P (10-pin)	Available	Unavailable
W	Adjustable	MS3112E14-5P (5-pin)	MS3112E12-10P (10-pin)	Available	Available

OUTLINE DRAWING AND INTERFACE



Connector	Parameter	Description
J1	IF input connector	N-female, panel-mounted
	Impedance	50 ohm
	10MHz reference input	
J2	RF output connector	CPR-137G
J3	DC	Panel-mount (MS3112E14-5P)
	A	N.C.(Not connected)
	B, C	+43 to +53 VDC (DC Power +)
	D, E	GND (DC Power -)
J4	M&C(Ethernet or RS232)	Panel-mount (MS3112E12-10P)
	J4-A	RS-232 Tx
	J4-B	RS-232 Rx
	J4-C	Ethernet Rx-
	J4-D	
	J4-E	EXT Mute GND (Option*)
	J4-F	EXT Mute HIGH (Option*)
	J4-G	Ethernet Tx+
	J4-H	RS-232 GND
	J4-J	Ethernet Rx+
	J4-K	Ethernet Tx-

* External mute option is available upon customer request. External mute is activated by connecting EXT Mute HIGH(J4-F) to EXT Mute GND(J4-E).