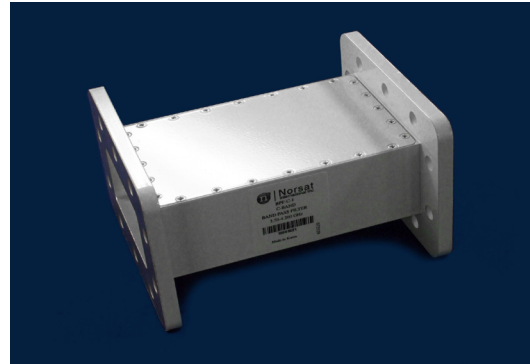




# MICROWAVE COMPONENT

## C-BAND BAND PASS FILTER



### APPLICATIONS

- Rejects terrestrial interference in C-Band (5G, Radar and C-Band transmitter)
- Easily installed between the feed and LNB
- Suitable for use with Norsat's C-Band LNBs
- Environmentally sealed and moisture resistant (IP66)

### SPECIFICATIONS (BPF-C-1)

<b>Frequency Range</b>	3.70 to 4.20 GHz
<b>VSWR</b>	1.4 : 1 max.
<b>Insertion Loss in Band</b>	0.5 dB max.
<b>Rejection</b>	25 dB min at 3.650 GHz and 4.250 GHz 60 dB min at 3.550 GHz and 4.350 GHz 70 dB min at 3.500 GHz and 4.400 GHz
<b>Group delay variation within +/-0.5MHz</b>	0.6 nsec
<b>Waveguide Flange</b>	CPR-229G (input), CPR-229F (output)
<b>Dimensions (L x W x H)</b>	120 mm x 100 mm x 70 mm
<b>Weight</b>	< 650 g

### SPECIFICATIONS (BPF-C-2)

<b>Frequency Range</b>	3.625 to 4.20 GHz
<b>VSWR</b>	1.4 : 1 max.
<b>Insertion Loss in Band</b>	0.5 dB max.
<b>Rejection</b>	25 dB min at 3.575 GHz and 4.250 GHz 60 dB min at 3.475 GHz and 4.350 GHz 70 dB min at 3.425 GHz and 4.400 GHz
<b>Group delay variation within +/-0.5MHz</b>	0.6 nsec
<b>Waveguide Flange</b>	CPR-229G (input), CPR-229F (output)
<b>Dimensions (L x W x H)</b>	120 mm x 100 mm x 70 mm
<b>Weight</b>	< 650 g

### SPECIFICATIONS (BPF-C-3)

<b>Frequency Range</b>	3.754 to 4.20 GHz
<b>VSWR</b>	1.4 : 1 max.
<b>Insertion Loss in Band</b>	0.5 dB max.
<b>Rejection</b>	25 dB min at 3.704 GHz and 4.250 GHz 60 dB min at 3.604 GHz and 4.350 GHz 70 dB min at 3.554 GHz and 4.400 GHz
<b>Group delay variation within +/-0.5MHz</b>	0.6 nsec
<b>Waveguide Flange</b>	CPR-229G (input), CPR-229F (output)
<b>Dimensions (L x W x H)</b>	120 mm x 100 mm x 70 mm
<b>Weight</b>	< 650 g

### SPECIFICATIONS (BPF-C-4)

<b>Frequency Range</b>	3.80 to 4.20 GHz
<b>VSWR</b>	1.4 : 1 max.
<b>Insertion Loss in Band</b>	0.5 dB max.
<b>Rejection</b>	25 dB in at 3.750 GHz and 4.250 GHz 60 dB min at 3.650 GHz and 4.350 GHz 70 dB min at 3.600 GHz and 4.400 GHz
<b>Group delay variation within +/-0.5MHz</b>	0.6 nsec
<b>Waveguide Flange</b>	CPR-229G (input), CPR-229F (output)
<b>Dimensions (L x W x H)</b>	120 mm x 100 mm x 70 mm
<b>Weight</b>	< 650 g





### SPECIFICATIONS (BPF-C-5)

<b>Frequency Range</b>	3.90 to 4.20 GHz
<b>VSWR</b>	1.4 : 1 max.
<b>Insertion Loss in Band</b>	0.5 dB max.
<b>Rejection</b>	25 dB min at 3.850 GHz and 4.250 GHz 60 dB min at 3.750 GHz and 4.350 GHz 70 dB min at 3.700 GHz and 4.400 GHz
<b>Group delay variation within +/-0.5MHz</b>	0.6 nsec
<b>Waveguide Flange</b>	CPR-229G (input), CPR-229F (output)
<b>Dimensions (L x W x H)</b>	120 mm x 100 mm x 70 mm
<b>Weight</b>	< 650 g

### SPECIFICATIONS (BPF-C-7)

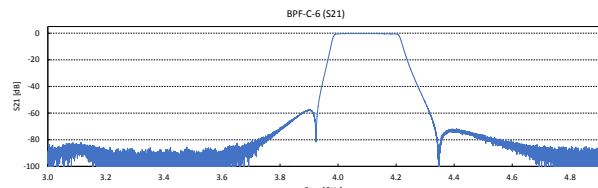
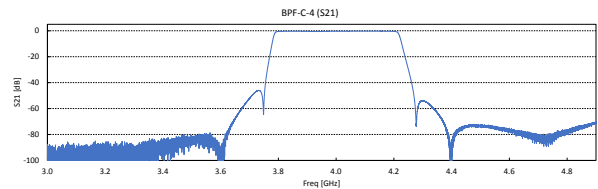
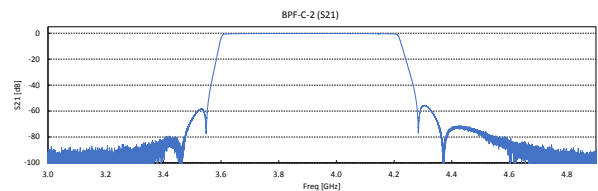
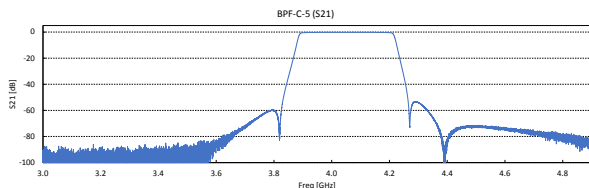
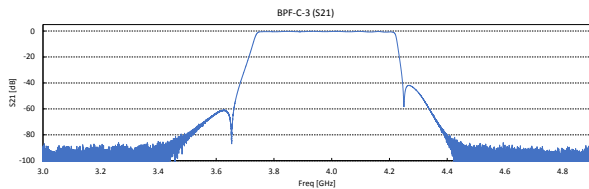
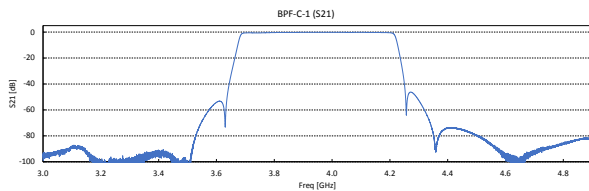
<b>Frequency Range</b>	4.10 to 4.20 GHz
<b>VSWR</b>	1.4 : 1 max.
<b>Insertion Loss in Band</b>	0.5 dB max.
<b>Rejection</b>	25 dB min at 4.05 GHz and 4.250 GHz 60 dB min at 3.950 GHz and 4.350 GHz 70 dB min at 3.900 GHz and 4.400 GHz
<b>Group delay variation within +/-0.5MHz</b>	0.6 nsec
<b>Waveguide Flange</b>	CPR-229G (input), CPR-229F (output)
<b>Dimensions (L x W x H)</b>	120 mm x 100 mm x 70 mm
<b>Weight</b>	< 650 g

### SPECIFICATIONS (BPF-C-6)

<b>Frequency Range</b>	4.00 to 4.20 GHz
<b>VSWR</b>	1.4 : 1 max.
<b>Insertion Loss in Band</b>	0.5 dB max.
<b>Rejection</b>	25 dB min at 3.950 GHz and 4.250 GHz 60 dB min at 3.850 GHz and 4.350 GHz 70 dB min at 3.800 GHz and 4.400 GHz
<b>Group delay variation within +/-0.5MHz</b>	0.6 nsec
<b>Waveguide Flange</b>	CPR-229G (input), CPR-229F (output)
<b>Dimensions (L x W x H)</b>	120 mm x 100 mm x 70 mm
<b>Weight</b>	< 650 g

### SPECIFICATIONS (BPF-C-8)

<b>Frequency Range</b>	3.82 to 4.20 GHz
<b>VSWR</b>	1.4 : 1 max.
<b>Insertion Loss in Band</b>	0.5 dB max.
<b>Rejection</b>	25 dB min at 3.77 GHz and 4.250 GHz 60 dB min at 3.67 GHz and 4.350 GHz 70 dB min at 3.620 GHz and 4.400 GHz
<b>Group delay variation within +/-0.5MHz</b>	0.6 nsec
<b>Waveguide Flange</b>	CPR-229G (input), CPR-229F (output)
<b>Dimensions (L x W x H)</b>	120 mm x 100 mm x 70 mm
<b>Weight</b>	< 650 g



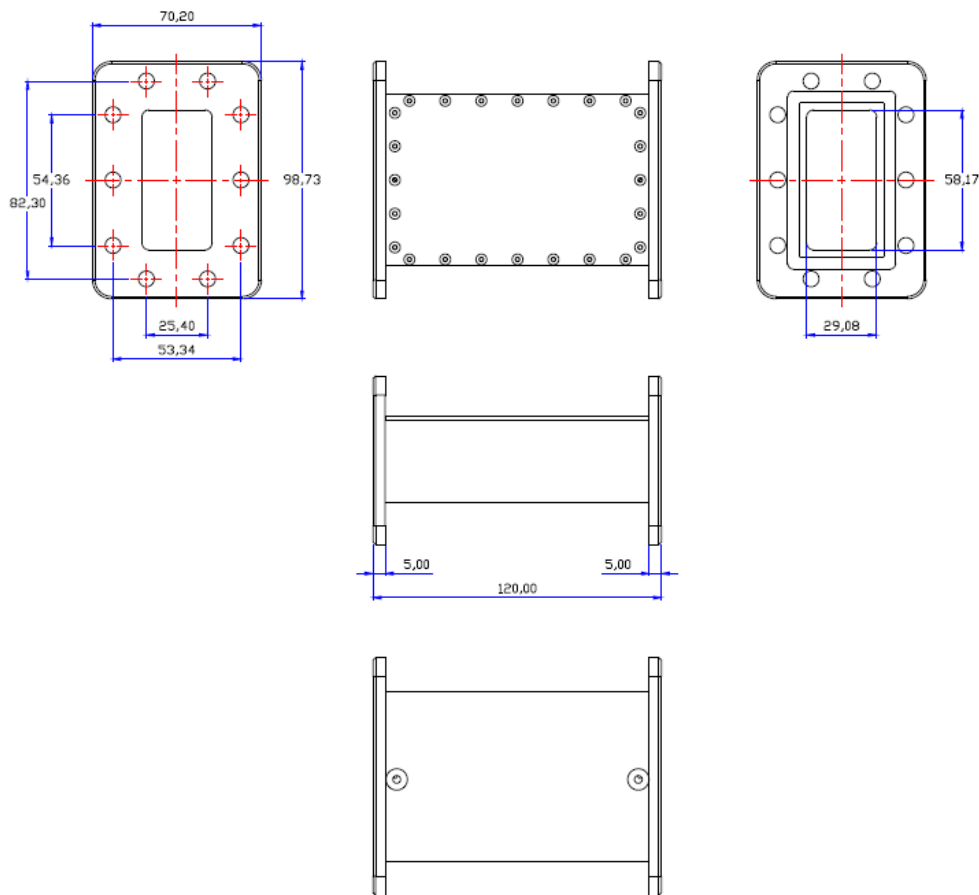


HOW TO ORDER

# BPF-C-1

- FREQUENCY**
- 1: 3.70 - 4.20 GHz
  - 2: 3.625 - 4.20 GHz
  - 3: 3.754 - 4.20 GHz
  - 4: 3.80 - 4.20 GHz
  - 5: 3.90 - 4.20 GHz
  - 6: 4.00 - 4.20 GHz
  - 7: 4.10 - 4.20 GHz
  - 8: 3.82 - 4.20 GHz

## MECHANICAL DIAGRAM



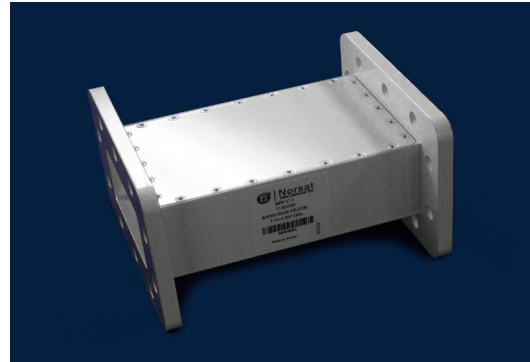


# MICROWAVE COMPONENT

## C-BAND BAND PASS FILTER

### APPLICATIONS

- Made in China
- Rejects terrestrial interference in C-Band (5G, Radar and C-Band transmitter)
- Easily installed between the feed and LNB
- Suitable for use with Norsat's C-Band LNBs
- Environmentally sealed and moisture resistant (IP66)



### SPECIFICATIONS (BPF-CN-1)

<b>Frequency Range</b>	3.70 to 4.20 GHz
<b>VSWR</b>	1.4 : 1 max.
<b>Insertion Loss in Band</b>	0.5 dB max.
<b>Rejection</b>	25 dB min at 3.650 GHz and 4.250 GHz 60 dB min at 3.550 GHz and 4.350 GHz 70 dB min at 3.500 GHz and 4.400 GHz
<b>Group delay variation within +/-0.5MHz</b>	0.6 nsec
<b>Waveguide Flange</b>	CPR-229G (input), CPR-229F (output)
<b>Dimensions (L x W x H)</b>	120 mm x 100 mm x 70 mm
<b>Weight</b>	< 650 g

### SPECIFICATIONS (BPF-CN-2)

<b>Frequency Range</b>	3.625 to 4.20 GHz
<b>VSWR</b>	1.4 : 1 max.
<b>Insertion Loss in Band</b>	0.5 dB max.
<b>Rejection</b>	25 dB min at 3.575 GHz and 4.250 GHz 60 dB min at 3.475 GHz and 4.350 GHz 70 dB min at 3.425 GHz and 4.400 GHz
<b>Group delay variation within +/-0.5MHz</b>	0.6 nsec
<b>Waveguide Flange</b>	CPR-229G (input), CPR-229F (output)
<b>Dimensions (L x W x H)</b>	120 mm x 100 mm x 70 mm
<b>Weight</b>	< 650 g

### SPECIFICATIONS (BPF-CN-3)

<b>Frequency Range</b>	3.754 to 4.20 GHz
<b>VSWR</b>	1.4 : 1 max.
<b>Insertion Loss in Band</b>	0.5 dB max.
<b>Rejection</b>	25 dB min at 3.704 GHz and 4.250 GHz 60 dB min at 3.604 GHz and 4.350 GHz 70 dB min at 3.554 GHz and 4.400 GHz
<b>Group delay variation within +/-0.5MHz</b>	0.6 nsec
<b>Waveguide Flange</b>	CPR-229G (input), CPR-229F (output)
<b>Dimensions (L x W x H)</b>	120 mm x 100 mm x 70 mm
<b>Weight</b>	< 650 g

### SPECIFICATIONS (BPF-CN-4)

<b>Frequency Range</b>	3.80 to 4.20 GHz
<b>VSWR</b>	1.4 : 1 max.
<b>Insertion Loss in Band</b>	0.5 dB max.
<b>Rejection</b>	25 dB in at 3.750 GHz and 4.250 GHz 60 dB min at 3.650 GHz and 4.350 GHz 70 dB min at 3.600 GHz and 4.400 GHz
<b>Group delay variation within +/-0.5MHz</b>	0.6 nsec
<b>Waveguide Flange</b>	CPR-229G (input), CPR-229F (output)
<b>Dimensions (L x W x H)</b>	120 mm x 100 mm x 70 mm
<b>Weight</b>	< 650 g



### SPECIFICATIONS (BPF-CN-5)

<b>Frequency Range</b>	3.90 to 4.20 GHz
<b>VSWR</b>	1.4 : 1 max.
<b>Insertion Loss in Band</b>	0.5 dB max.
<b>Rejection</b>	25 dB min at 3.850 GHz and 4.250 GHz 60 dB min at 3.750 GHz and 4.350 GHz 70 dB min at 3.700 GHz and 4.400 GHz
<b>Group delay variation within +/-0.5MHz</b>	0.6 nsec
<b>Waveguide Flange</b>	CPR-229G (input), CPR-229F (output)
<b>Dimensions (L x W x H)</b>	120 mm x 100 mm x 70 mm
<b>Weight</b>	< 650 g

### SPECIFICATIONS (BPF-CN-7)

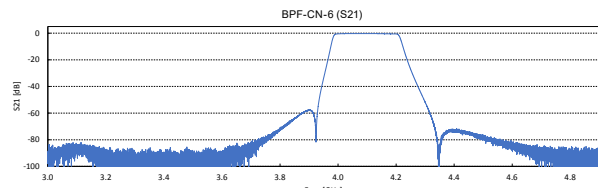
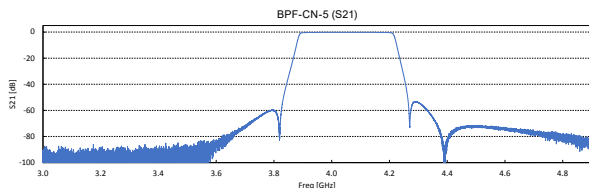
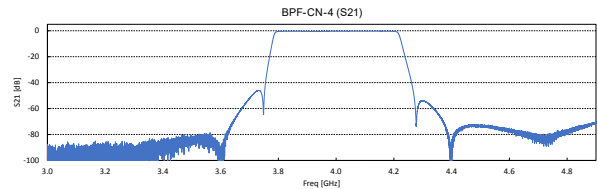
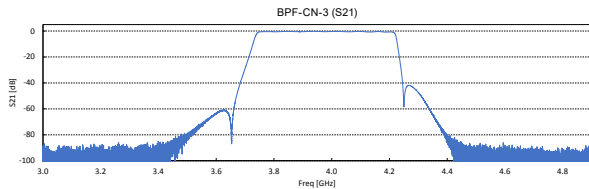
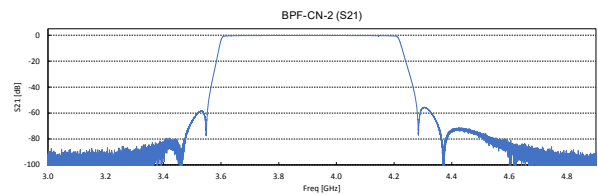
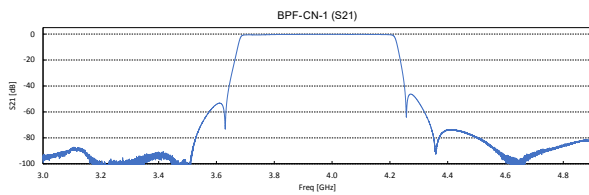
<b>Frequency Range</b>	4.10 to 4.20 GHz
<b>VSWR</b>	1.4 : 1 max.
<b>Insertion Loss in Band</b>	0.5 dB max.
<b>Rejection</b>	25 dB min at 4.05 GHz and 4.250 GHz 60 dB min at 3.950 GHz and 4.350 GHz 70 dB min at 3.900 GHz and 4.400 GHz
<b>Group delay variation within +/-0.5MHz</b>	0.6 nsec
<b>Waveguide Flange</b>	CPR-229G (input), CPR-229F (output)
<b>Dimensions (L x W x H)</b>	120 mm x 100 mm x 70 mm
<b>Weight</b>	< 650 g

### SPECIFICATIONS (BPF-CN-6)

<b>Frequency Range</b>	4.00 to 4.20 GHz
<b>VSWR</b>	1.4 : 1 max.
<b>Insertion Loss in Band</b>	0.5 dB max.
<b>Rejection</b>	25 dB min at 3.950 GHz and 4.250 GHz 60 dB min at 3.850 GHz and 4.350 GHz 70 dB min at 3.800 GHz and 4.400 GHz
<b>Group delay variation within +/-0.5MHz</b>	0.6 nsec
<b>Waveguide Flange</b>	CPR-229G (input), CPR-229F (output)
<b>Dimensions (L x W x H)</b>	120 mm x 100 mm x 70 mm
<b>Weight</b>	< 650 g

### SPECIFICATIONS (BPF-CN-8)

<b>Frequency Range</b>	3.82 to 4.20 GHz
<b>VSWR</b>	1.4 : 1 max.
<b>Insertion Loss in Band</b>	0.5 dB max.
<b>Rejection</b>	25 dB min at 3.77 GHz and 4.250 GHz 60 dB min at 3.67 GHz and 4.350 GHz 70 dB min at 3.620 GHz and 4.400 GHz
<b>Group delay variation within +/-0.5MHz</b>	0.6 nsec
<b>Waveguide Flange</b>	CPR-229G (input), CPR-229F (output)
<b>Dimensions (L x W x H)</b>	120 mm x 100 mm x 70 mm
<b>Weight</b>	< 650 g





HOW TO ORDER

# BPF-CN-1

- FREQUENCY**
- 1: 3.70 - 4.20 GHz
  - 2: 3.625 - 4.20 GHz
  - 3: 3.754 - 4.20 GHz
  - 4: 3.80 - 4.20 GHz
  - 5: 3.90 - 4.20 GHz
  - 6: 4.00 - 4.20 GHz
  - 7: 4.10 - 4.20 GHz
  - 8: 3.82 - 4.20 GHz

## MECHANICAL DIAGRAM

