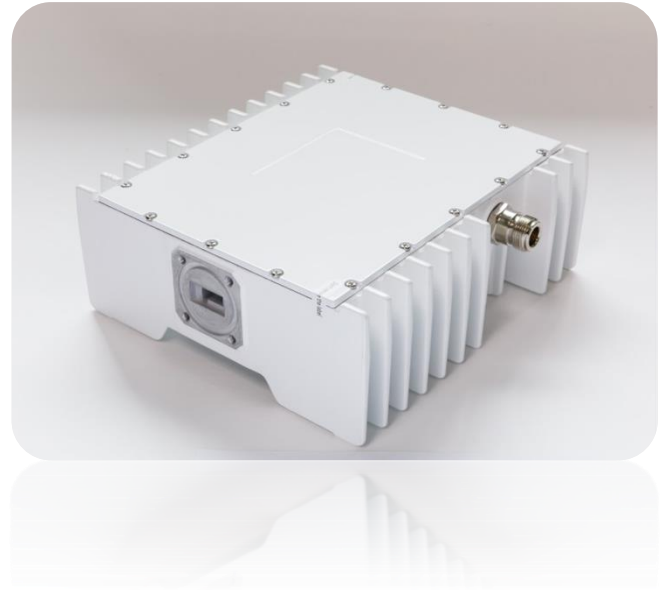




## 4W Ku-band G-series BUC



- 36dBm Output Power
- RF: 12.75-13.25GHz, LO= 11.8GHz
- DC Power Consumption: 35W
- Optional Internal Reference Source
- RoHS Compliant
- Two Years Warranty

### Models

Model Number	Description	RF (GHz)	IF (MHz)	Output Power
TB36GPFE-01	4W Ku-band, G-series, F- or N-type Connector	12.75-13.25	950-1450	+36 dBm
TB36GPNE-01				

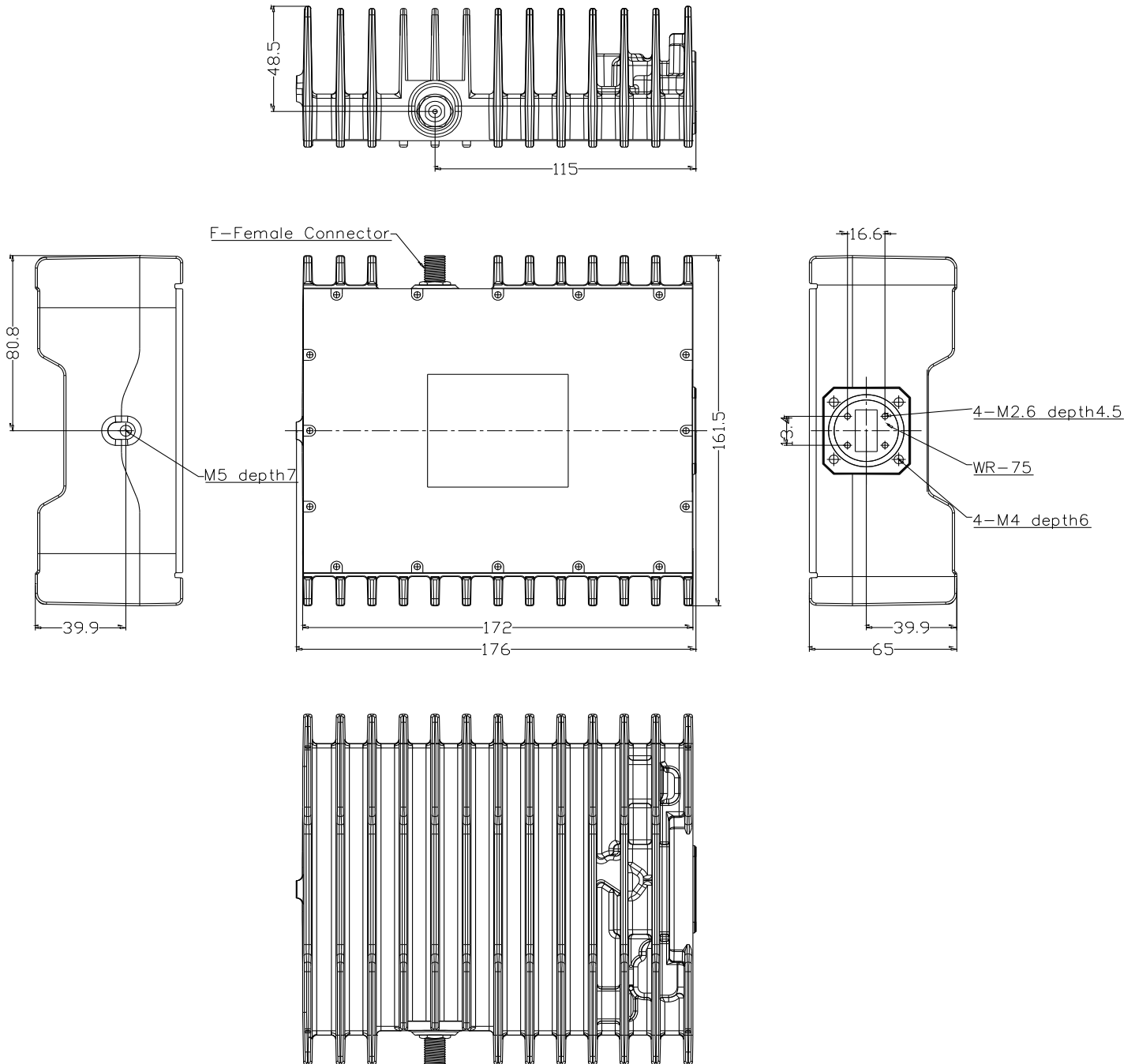
# 4W Ku-band G-series BUC

## Specifications

Parameters		Specifications
<b>Input Characteristics</b>		
Frequency Range		TB36G: 950-1450 MHz
Impedance		75 Ohm or 50 Ohm
Input VSWR		2 : 1
Interface		F- or N-type Connector
<b>Output Characteristics</b>		
Frequency Range		TB36G: 12.75-13.25 GHz (LO= 11.80 GHz)
Output Power @ 1dB G.C.P.		+36 dBm min. over temperature
Output VSWR		2 : 1
Interface		WR75G
<b>Transfer Characteristics</b>		
Frequency Sense		Non-inverted
Linear Gain		58 dB Typical
Gain Variation	Over 54 MHz	1.5 dB
	Over the Whole Bandwidth	4 dB
	Over Operation Temperature	4 dB
Spurious	In Band	-60 dBc
	Out of Band	-50 dBc
Phase Noise (Typical)	100 Hz	-65 dBc/Hz
	1 KHz	-75 dBc/Hz
	10 KHz	-85 dBc/Hz
	100 KHz	-95 dBc/Hz
<b>Miscellaneous</b>		
External Reference	Input Frequency	10 MHz
	Input Power	-5 to +5 dBm @ Input Port
	Phase Noise	-125 dBc/Hz Max. @ 100 Hz Offset -135 dBc/Hz Max. @ 1 KHz Offset -140 dBc/Hz Max. @ 10 KHz Offset
Operating Voltage		15-24 VDC
Power Consumption		35W Maximum
Operating Temperature		-40 to +55 °C
Humidity & Waterproof/Dustproof		Up to 100% / IP67
Internal Function		Lock detector shuts off Tx in case of LO unlocked
Dimension & Weight		176.1 x 161.5 x 65 mm / 1.8 kg

# 4W Ku-band G-series BUC

## Mechanical Drawing



TB36G\_20190515\_REV2.0